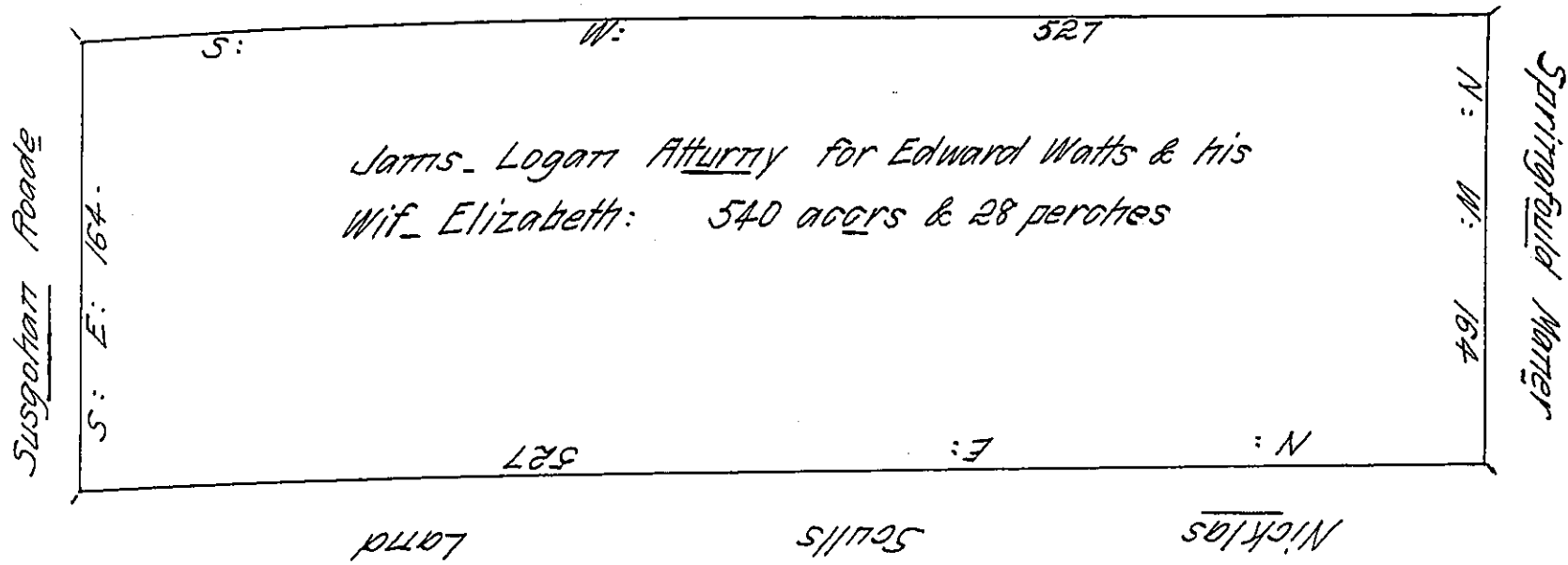


This Pittswaters Land from Will^m Salloway:



The 27th of the 12th m^o 170^y: then Reasurvaid to James Logans Attorney for Edward Watts & his Wife Elizabeth a Certain tract of Land in the County of Philadelphia begining at a Corner in the Roade Called the Susgohana Roade answering to a Line of marked trees Urged by Nicholas Skull to ^{be} the true and old Line deviding it from Thomas Pittswaters Land from William Salloway from thence South West by the said Line five hundred and twenty Seven perches to a Hickry Stump marked deviding it from part of Springfould Matter from thence by an old Line of marked trees North West one hundred and Sixty four perches to a Corner answering to a Line of marked trees deviding it from the said Skulls Land from thence by the said Line North East five hundred twenty seven perches to the said Roade from thence South East by a Line of marked trees one hundred sixty four perches to the place of begining Containeing and Survaid for five hundred & forty acors & twenty Eight perches by Vertue of a Warr^t from Edward Pennington Survey^r General directed Unto me bearing date the 14th of the 11th m^o Last past Fr Me David Powell —

IN TESTIMONY that the above is a copy of the original remaining on file in the Department of Internal Affairs of Pennsylvania, made conformably to an Act of Assembly approved the 16th day of February, 1833, I have hereunto set my Hand and caused the Seal of said Department to be affixed at Harrisburg, this Seventh day of October 1910

Nancy Howell
Secretary of Internal Affairs.